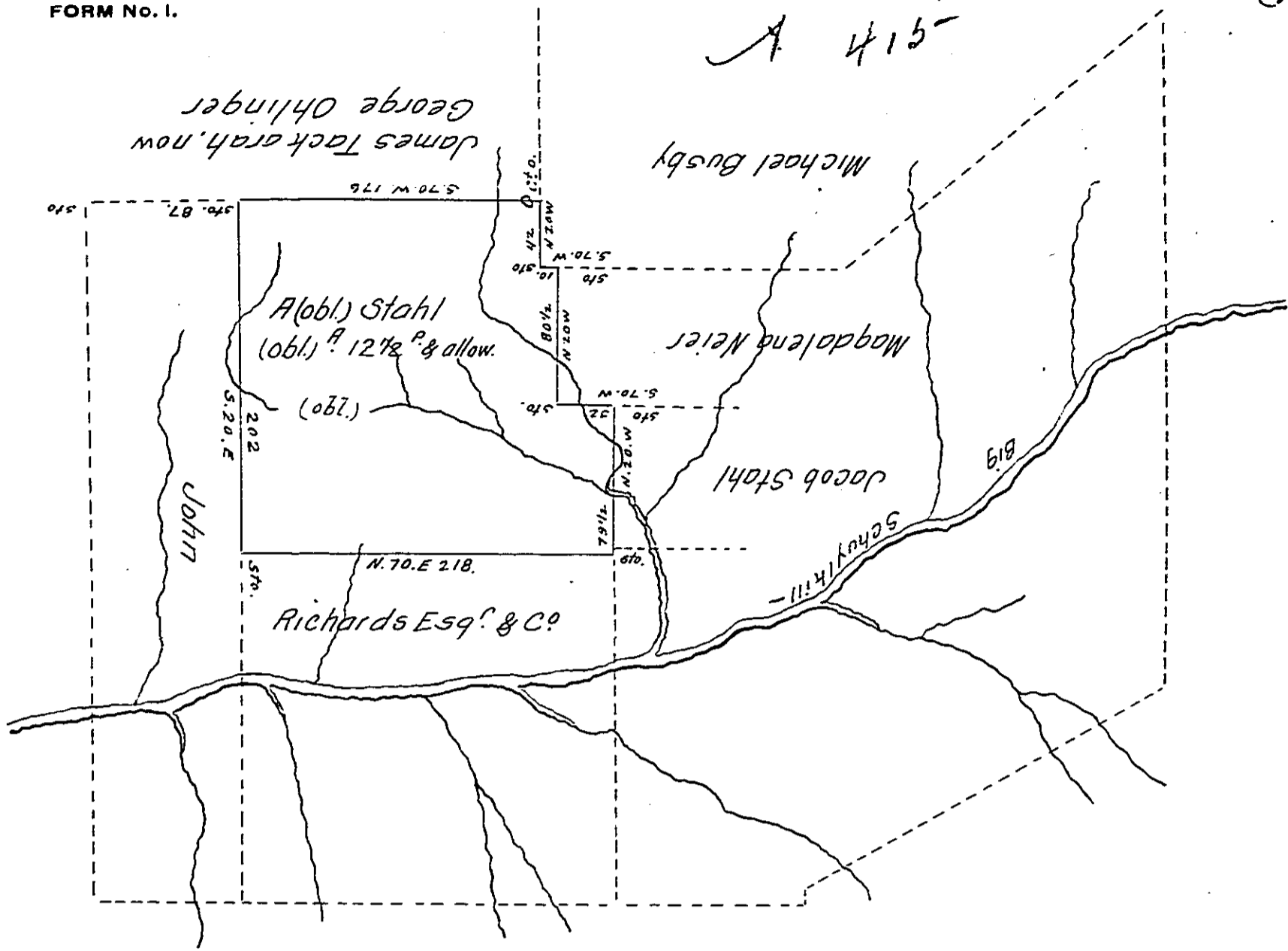


A 415



Situate in Schuylkill Township, Schuylkill County, Containing $234^A 12\frac{1}{2}^P$ & allowance of six per Cents for Roads &c. part of 1535^A & allow. which was surveyed to Francis Parvin & Benjamin Lightfoot, by a Warrant granted to them the 5th of July A. D. 1751, surveyed for Adam Stahl, Oct (obl.) the 10th A. D. 1823. By

To Samuel (obl.) chran. Esqr.
Surveyor Gen! of Pensy!

Jon. Dreher. D. S.

IN TESTIMONY that the above is a copy of the original remaining on file in the Department of Internal Affairs of Pennsylvania, made conformably to an Act of Assembly approved the 16th day of February, 1833, I have hereunto set my Hand and caused the Seal of said Department to be affixed at Harrisburg, this twelfth day of July 1906.

Geac B. Brown
Secretary of Internal Affairs.